

The 3-layer panel is often used for making kitchens, lockers or furniture.
To apply this correctly, here are some aspects that need to be taken into account.

It is advisable to use cleats on the inside for kitchen cabinets. These should be placed horizontally and be up to 60 mm shorter than the plate. A minimum of 2 should be placed per door (Fig. 1).

The advice is to make the panels no larger than 1 m² surface where the height or width is not more than 120 cm.

For large doors or doors where flatness is very close, it is possible to use a door-aligner for panels.

This is a metal strip that can be milled in the wood (fig. 2).

After cutting the panels to size, the sides can be finished in different ways. These can be set in miter as outlined below (Fig. 3) or they can be colored with a stain. After the facilities for locks and hinges have been installed, the door must be finished all around. This should be done by means of a film-forming lacquer or stain to avoid the influence of moisture.

Given the appearance of this product, this is often done with a transparent product. We recommend testing this in advance to ensure that you know the result.

These plates are glued for an indoor climate and the percentage of moisture is therefore about 12%.

To prevent operation, the panels must be stored dry and flat in an indoor climate immediately upon arrival.

image 1

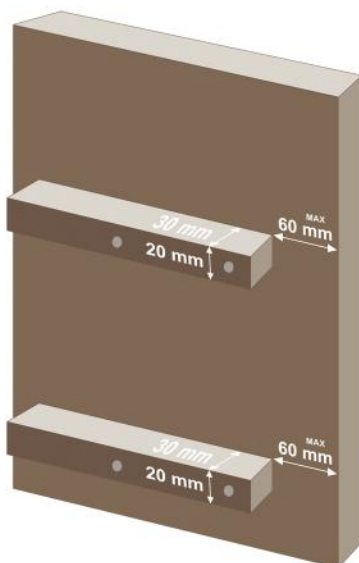


image 2

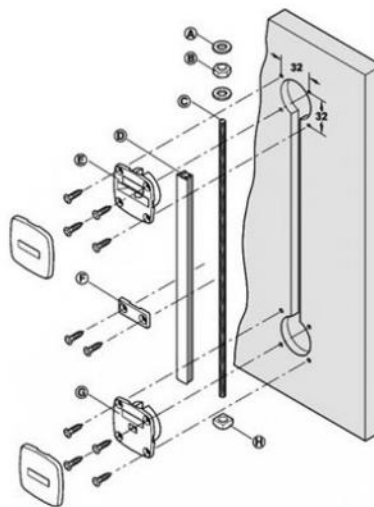


image 3

